

ControlVu Secure High Quality PoE Touch Panel

Touch panel control and design at your fingertips

ControlVu™ gives operators the freedom to control devices directly from a PoE tablet, with a simple touch. ControlVu can be easily designed with TRx's control panel designer module, where every button on every panel can be customized to the operators' needs. Customization options on the panel are endless and can include any number of buttons, colors and functions. Each button can be programmed to launch a different layout, manipulate sources and displays, control external devices, or run any number of the customizable scripts. All of these features are available for users to customize without having to write a single line of code, creating a flexible user experience for their operators.



USER FRIENDLY

Change layouts, control devices, runs scripts - without ANY programming



HIGHLY CUSTOMIZABLE

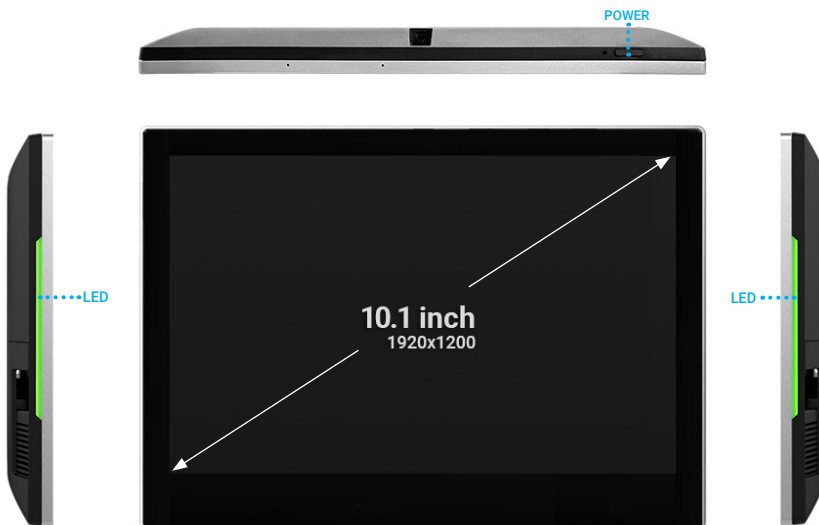
Chose your look with any design, logo and images. Run any script or command.



SECURE

Highly secure, designed for mission-critical environments

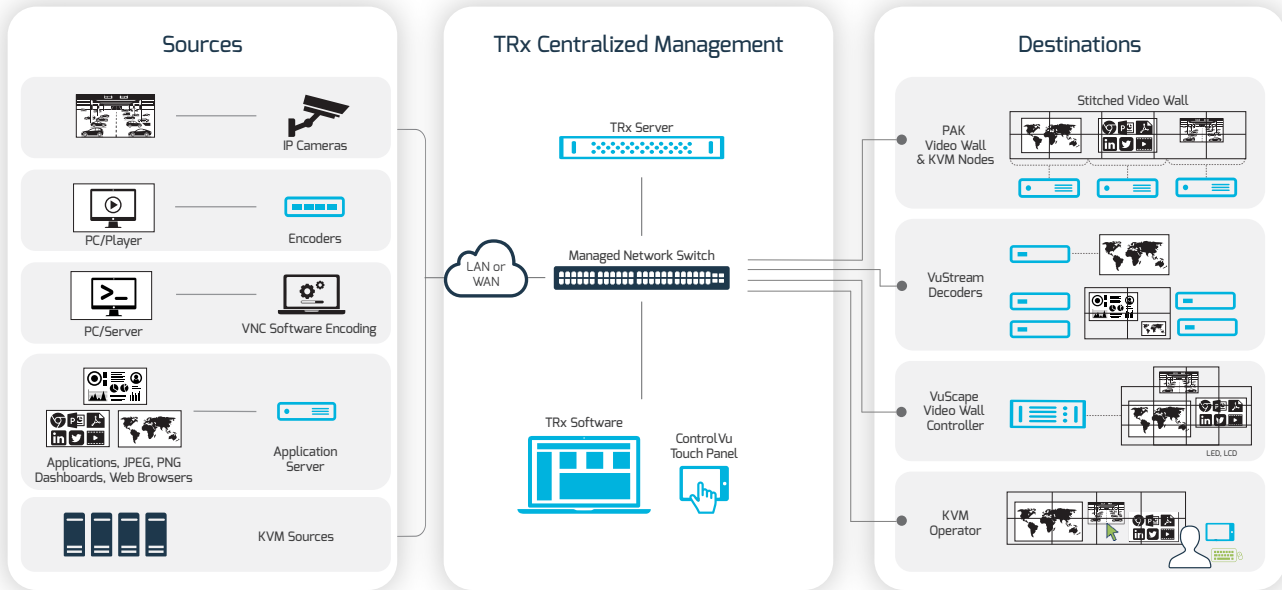
ControlVu Hardware



Highly Secure Touch Panel

- ✓ Secure Linux-Based OS
- ✓ No Camera
- ✓ No Wi-Fi
- ✓ No Bluetooth
- ✓ PoE

ControlVu Workflow

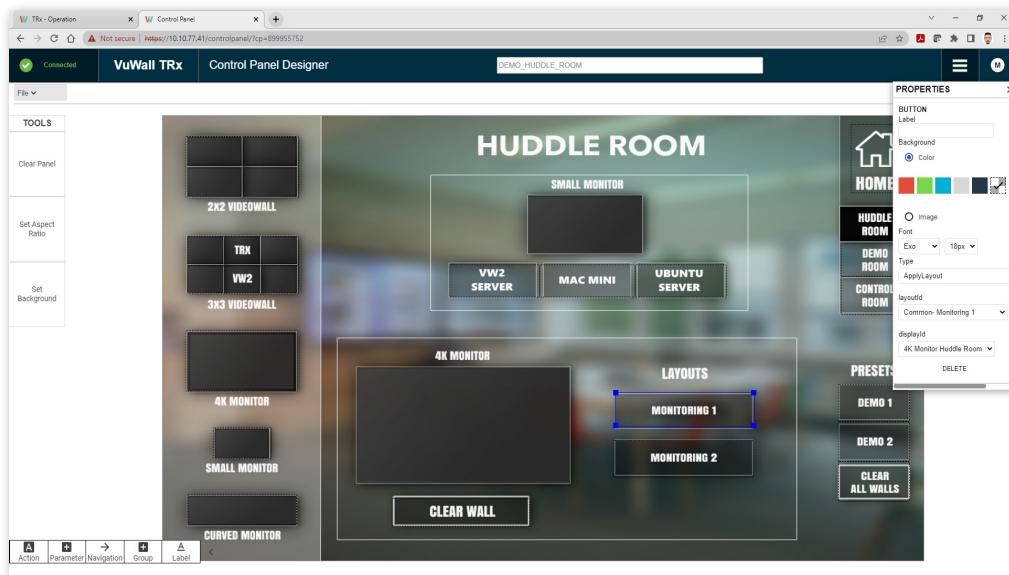


ControlVu Specifications

Technical Specifications	10.1" ControlVu
Part Number	ControlVu-10-3
Resolution	1920x1200
Brightness	300 nits
System	
OS	Secure Linux-Based OS
Network LAN	1 x RJ45 , 1 x Gigabit Ethernet
WiFi	No
Camera	No
Bluetooth	No
Power over Ethernet (PoE)	PoE, 802.3af/at compliant
Physical	
Size	10.1"
Weight	600g / 1.32 lbs (without stand)
Dimensions	241.9 x 173.4 x 20.8 mm / 9.52 x 6.82 x 0.81" (WxDxH)
Mounting/VESA	Tabletop
Other	
Storage Temperature	-15 to ~ 65°C / 5 to ~149°F
Working Temperature	0 to ~ 40°C / 32 to ~104°F
Storage/Working Humidity	10 - 90% non-condensing
MTBF	45,000 hours
Warranty	3 years

Control Panel Designer

The integrated Control Panel Designer is a module within the TRx™ software that allows you to easily build custom control panels, without any programming. Each button can launch layouts, scripts or even control external devices. Multiple panels can be created from the same interface, allowing a single admin to design a custom panel for every operator station. With endless design possibilities, users can upload logos, images, and backgrounds and create buttons from a variety of shapes and colors. The built-in scripting tool allows for an easy way to assign a series of multiple tasks with a single button. These tasks may include various commands such as manipulating layouts and other triggers, as well as controlling external devices such as switching displays on and off, controlling audio settings.



Features

- ✓ Compatible with ControlVu touch panel and compatible browsers running on mobile devices or desktops
- ✓ Customizable buttons, backgrounds, and images
- ✓ Customizable actions to launch layouts, scripts, and control external devices such as displays, audio, etc.



CORPORATE HQ
 VuWall Technology Inc.
 181 Hymus Blvd., Suite 301
 Montreal, Quebec
 H9R 5P4, Canada
 +1 514 505 4436

EUROPEAN HQ
 VuWall Technology Europe GmbH
 Birnenweg 15
 72766 Reutlingen
 Germany
 +49 7121 766620

US OFFICE
 VuWall USA Inc.
 2662 Holcomb Bridge Road
 Suite 326
 Roswell, GA, 30076 USA
 (844) 933 9255



VuWall

Control what you see.
www.vuwall.com
sales@vuwall.com